

Software Used: MEC-CAD PONCAD

Scaffolding: Layher Allround system

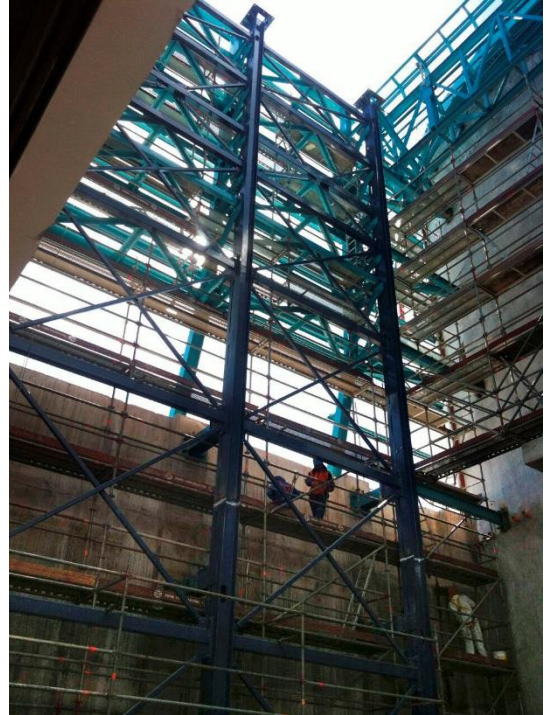
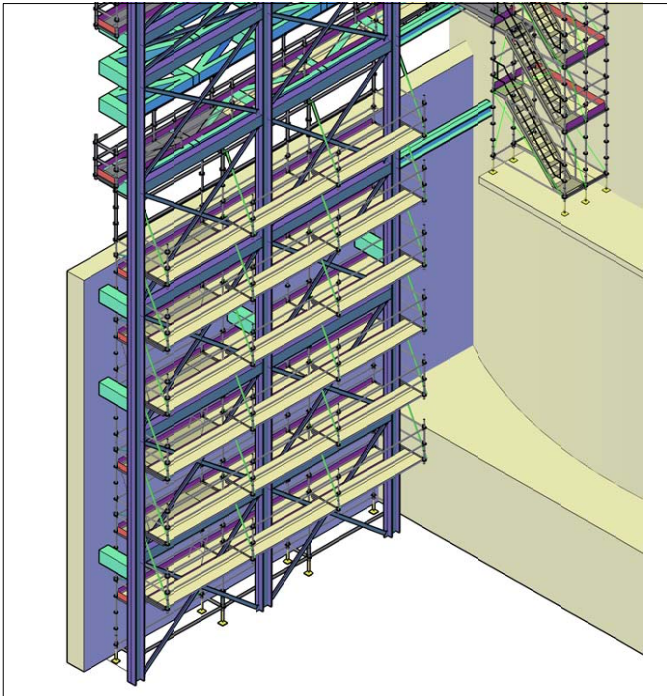
Difficulty: Intricacy of existing metal structure

Parameters: Height: 25mts; Weight: 13.5 Tons; 380 mts² aprox

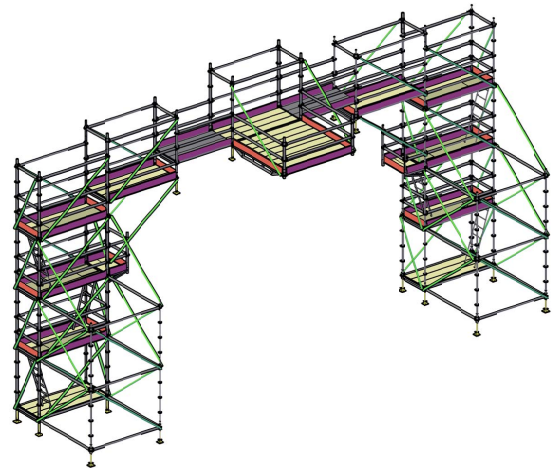


INGENIERÍA
Gestión Integral en Andamios

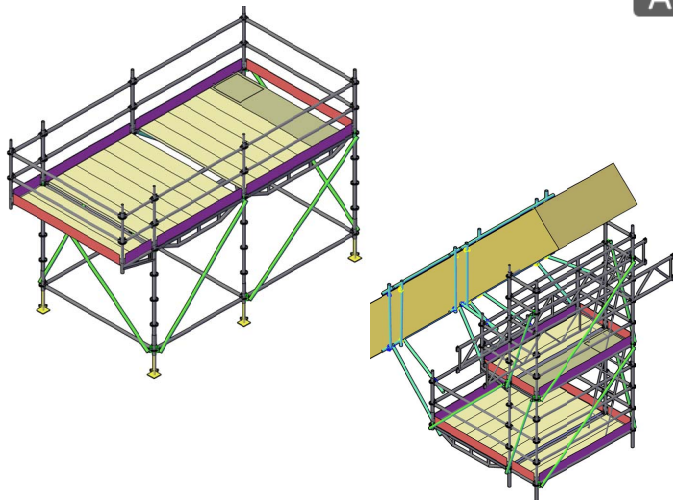
Large Synoptic Survey Telescope (LSST) - Cerro Pachon, Chile



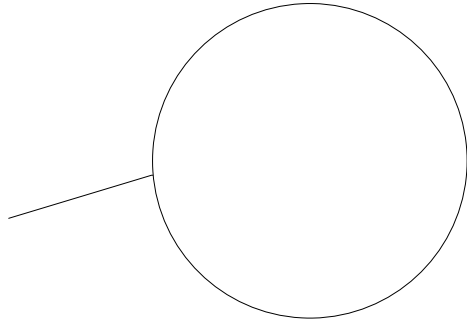
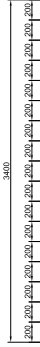
A&C Engineering Mining Projects



A&C Engineering Offshore Projects



Upcoming Project -LSST Dome Facade



Upcoming Project - SOLDESP